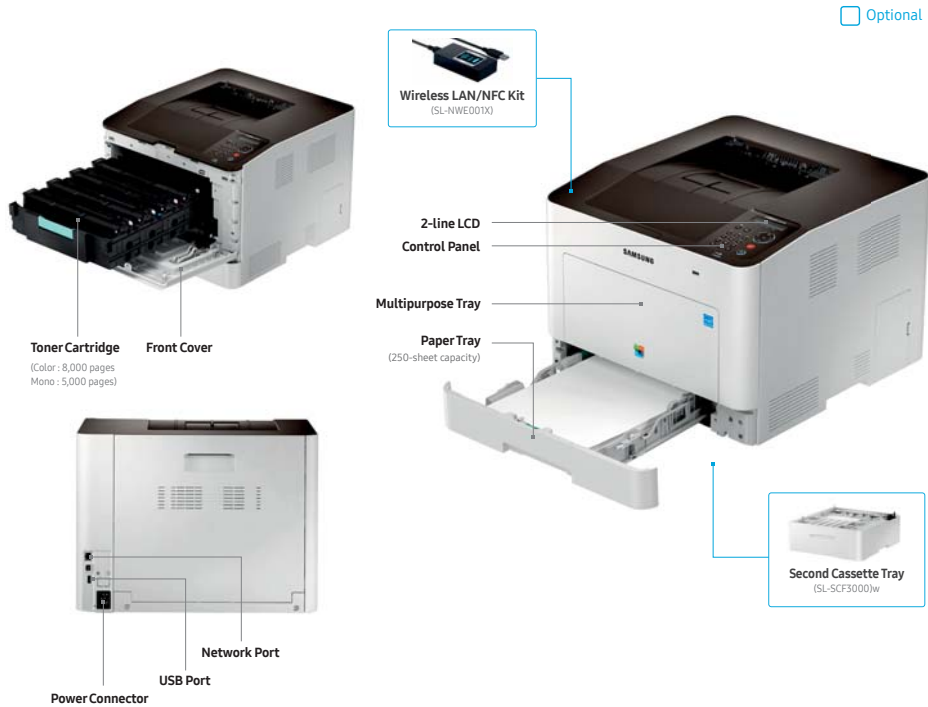


# CUSTOMIZE YOUR PRINTER WITH FLEXIBLE OPTIONS

## Configurations & Options



## SAMSUNG

### About Samsung Electronics Co., Ltd.

Samsung Electronics Co., Ltd. inspires the world and shapes the future with transformative ideas and technologies, redefining the worlds of TVs, smartphones, wearable devices, tablets, cameras, digital appliances, printers, medical equipment, network systems and semiconductors. We are also leading in the Internet of Things space through, among others, our Digital Health and Smart Home initiatives. We employ 307,000 people across 84 countries. To discover more, please visit our official website at [www.samsung.com](http://www.samsung.com) and our official blog at [global.samsungtomorrow.com](http://global.samsungtomorrow.com).

Copyright © 2016 Samsung Electronics Co., Ltd. All rights reserved. Specifications and designs are subject to change without notice. Nonmetric weights and measurements are approximate. All data were deemed correct at time of creation. Samsung is not liable for errors or omissions. All brand, product, service names and logos are trademarks and/or registered trademarks of their respective owners and are hereby recognized and acknowledged.

AirPrint is a trademark of Apple Inc. registered in the U.S. and other countries. Android and Google Cloud Print are trademarks of Google Inc. Samsung Cloud Print is either a trademark or registered trademark of Samsung Electronics Co., Ltd. Microsoft and Windows are registered trademarks of Microsoft Corporation in the United States and/or other countries.

Mopria®, the Mopria® Logo and the Mopria® Alliance logo are registered trademarks and service marks of Mopria Alliance, Inc. in the United States and other countries.

Samsung Electronics Co., Ltd.

129 Samsung-ro, Yeongtong-gu, Suwon-si, Gyeonggi-do 16677, Korea

2016. 07.



proXpress

Printer  
C3010ND



Professional-quality  
for you  
Cost efficiency  
for your business

SMART PRINTING.  
BUSINESS INNOVATION.



# INCREASE WORK PRODUCTIVITY WITH PROFESSIONAL PRINT QUALITY AND COST EFFICIENCY

## Overview

### Elevate your business with cost efficiency and professional printing

In today's competitive marketplace, businesses cannot afford devices that slow them down. Today's printers must be cost-efficient and ensure professional-grade print quality and fast printing for high productivity. Successful businesses need smart printing solutions with exceptional performance and low maintenance costs.

New Samsung ProXpress C3010ND provides businesses with cost efficiency, professional print quality and fast printing speed. A larger toner capacity reduces Total Cost of Ownership (TCO) and Samsung's IFS technology lowers power consumption. Businesses can also count on Samsung ReCP technology for high-quality print with the finest details. Samsung ProXpress C3010ND boosts productivity by cutting print times with exceptionally fast print speed, and enables businesses to expand their work range with support for a variety of thicker paper types. Samsung ProXpress C3010ND gives small and medium-sized businesses the tools they need to compete at a higher level.

#### Samsung ProXpress :



C3010ND (30 ppm)

## Key benefits

### Worry less about costs with money-saving technology

- Lower TCO with larger toner capacity
- Reduce power consumption with Samsung IFS technology

### Print with professional-quality color and remarkable precision

- Enhance graphic quality with Samsung Rendering engine for Clean Page (ReCP) technology
- Get high-quality print output with crisp detail

### Boost productivity with exceptionally fast printing

- Experience strong performance with a Dual CPU (800 MHz & 400 MHz)
- Support various types of thicker paper
- Ready for PrinterOn

# WORRY LESS ABOUT COSTS WITH MONEY-SAVING TECHNOLOGY

## Lower TCO with larger toner capacity

High-capacity toner cartridges yield 8K in mono and 5K in color, supporting businesses with heavy print demands and cutting cartridge costs. Long-lasting consumable parts significantly reduce maintenance costs.



 **Larger**  
Toner capacity

## Reduce power consumption with Samsung IFS technology

Energy-efficient Instant Fusing System (IFS) technology shortens warm-up periods before print jobs. The technology minimizes total energy consumption when the device is sleeping, warming up and operating.

 **Lower**  
power consumption



## PRINT WITH PROFESSIONAL-QUALITY COLOR AND REMARKABLE PRECISION

### Enhance graphic quality with Samsung ReCP technology

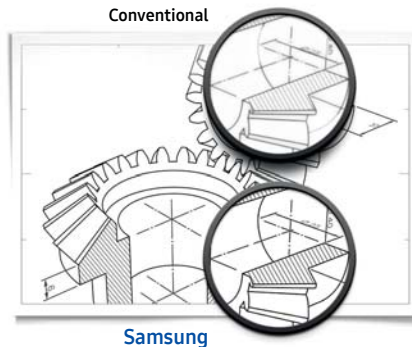
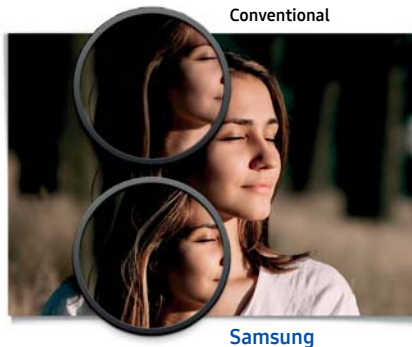
Attention to detail is critical for professionals. Samsung's unique ReCP technology built into Samsung ProXpress C3010ND ensures crisp detail, so that even the smallest printed text is legible.



Up to  
**9600 x 600 dpi**

### Get high-quality print output with crisp detail

Images require accurate color expression and precise details. With the Samsung ProXpress C3010ND, business can print images with the natural colors of the original image, including all the small detail with a wider contrast range, and even complex blue prints with intricate details.



## BOOST PRODUCTIVITY WITH EXCEPTIONALLY FAST PRINTING

### Experience strong performance with a Dual CPU

Samsung ProXpress C3010ND is equipped with a Dual CPU optimized for printing. The Dual CPU boosts work productivity with remarkable print speed for heavy jobs, particularly when printing graphic images.



### Support various types of thicker paper



Expand your range of productivity with Samsung ProXpress C3010ND. Print documents from office envelopes to professional certificates with support for various types of thick paper up to 220g/m<sup>2</sup>.



### Ready for PrinterOn

Print securely and efficiently from virtually anywhere. Because Samsung ProXpress C3010ND is ready for PrinterOn, you can easily add other devices.



# SAMSUNG PRINTER

## proXpress C3010ND

### Specifications

General	C3010ND
Standard Functions	Print
Processor	800 MHz + 400 MHz Dual CPU
Operational Panel	2 line LCD
Memory (Standard)	256 MB
Memory (Maximum)	256 MB
Interface (Standard)	USB Device, USB Host x 2, Ethernet 10/100/1000 Base TX
Interface (Optional)	IEEE 802.11 b/g/n (NFC Active Type)
Warm-up Time (From Power On)	26 sec
Warm-up Time (From Sleep)	26 sec
Power Requirements	AC 220 - 240 V, 50 / 60 Hz, AC 110 - 127 V, 50 / 60 Hz (Not dual voltage, power supply varies by country)
Power Consumption	500 W (Printing), 40 W (Ready), 0.9 W (Sleep), 1.45 kWh (TEC)
Noise Level	Less than 52 dBA (Printing), Less than 37 dBA (Ready)
Dimension (WxDxH)	420 x 452.5 x 311.3 mm (16.5" x 17.8" x 12.3")
Weight (SET Only / SET with Supplies)	Set Only : 16.7 kg (36.8 lb) Set with Supplies : 19.7 kg (43.5 lb)
Max. Monthly Duty Cycle	60,000 pages
Recommended Monthly Print Volume	1,000 - 2,500 pages
Security	SSL/TLS, IPv6, IPsec, SNMPv3, IEEE 802.1x, Kerberos, SMB, LDAP, Protocol&Port Management, IP/MAC Filtering Windows : XP (32/64 bit), 2003 Server (32/64 bit), Vista (32/64 bit), 2008 Server (32/64 bit), Windows 7 (32/64 bit), 2008 Server R2 (64 bit), Windows 8 (32/64 bit), Windows 8.1 (32/64 bit), Windows Server 2012 (64 bit), Windows Server 2012 R2 (64 bit), Windows 10 (32/64 bit) Linux : RedHat Enterprise Linux 5, 6, Fedora 12, 13, 14, 15, 16, 17, 18, 19, 20, OpenSUSE 11.2, 11.3, 11.4, 12.1, 12.2, 12.3, 13.1, Ubuntu 10.04, 11.04, 11.10, 12.04, 12.10, 13.04, 13.10, 14.04, SuSE Linux Enterprise Desktop 10, 11, Debian 6, 7, Mint 13, 14, 15, 16 Unix : Sun Solaris 9, 10, 11 (x86, SPARC), HP-UX 11.0, 11i v1, 11i v2, 11i v3 (PA-RISC, Itanium), IBM AIX 5.1, 5.2, 5.3, 5.4, 6.1, 7.1 (PowerPC) Mac : OS 10.5 - 10.11
Client OS Support	
Network Protocols	TCP/IPv4, IPv6, DHCP, BOOTP, AutoIP, DNS, DDNS, WINS, Standard TCP/IP, LPR/LPD, IPP, ThinPrint, Google Cloud Print, AirPrint, WSD print, FTP print, HTTP, SNMP (v1/2c/3), Telnet, SLP, Bonjour, UPnP (SSDP), WSD Discovery, SMTP, LDAP, SMB, Kerberos

Print	C3010ND
Speed (Mono)	Up to 30 ppm in A4 (31 ppm in Letter)
Speed (Color)	Up to 30 ppm in A4 (31 ppm in Letter)
First Print Out Time (Mono)	As fast as 9 sec
First Print Out Time (Color)	As fast as 10 sec
Resolution	Up to 9,600 x 600 dpi Effective Output
Print Languages	SPL, PCL5, PCL6, PS3, PDF V1.7
Duplex Print	Built-in
Direct Print Support	JPEG, PDF, PRN, TIFF, XPS
Print Features	WSD Print, Secure Print, Stored Print, Booklet Print, N-up, Cover Page Print, Barcode Print, Eco Print, Skip Blank Page, Poster Print, Watermark, Tray Priority Settings, Auto Tray Switching, Tray Protection, Direct Print from USB, Secure PDF Print
Mobile Print Feature	Apple AirPrint, Mopria-certified, Google Cloud Print, Samsung Cloud Print, PrinterOn Cloud Print, Samsung Mobile Print, Samsung Print Plugin

Paper Handling	C3010ND
Input Capacity (Cassette)	250 sheets
Input Capacity (Multipurpose Tray)	50 sheets
Input Capacity (Maximum)	1,400 sheets (Standard 300 sheets + Optional 550-sheet Second Cassette Feeder x 2)
Media Type (Cassette)	Plain, Thin, Thick, Thicker, Cotton, Colored, Pre-Printed, Recycled, Bond, Archive, Letterhead, Hole Punched, Cardstock, Glossy Photo, Envelope, Label
Media Type (Multipurpose Tray)	Plain, Thin, Thick, Thicker, Cotton, Colored, Pre-Printed, Recycled, Bond, Archive, Letterhead, Hole Punched, Cardstock, Glossy Photo, Envelope, Label
Media Size (Cassette)	A4, A5, A6, B5(JIS), B5(ISO), Legal, Letter, Executive, Statement, Oficio, Folio, Envelope Monarch, Envelope DL, Envelope C5, Envelope C6, Envelope No. 10, Envelope No. 9, Postcard, Custom (98 x 127 mm - 216 x 356 mm (3.86" x 5" - 8.5" x 14"))
Media Size (Multipurpose Tray)	A4, A5, A6, B5(JIS), B5(ISO), Legal, Letter, Executive, Statement, Oficio, Folio, Envelope Monarch, Envelope DL, Envelope C5, Envelope C6, Envelope No. 10, Envelope No. 9, Postcard, Index Card 3x5, Custom (76 x 127 mm - 216 x 356 mm (3" x 5" - 8.5" x 14"))
Media Weights (Cassette)	60 - 220 g/m <sup>2</sup>
Media Weights (Multipurpose Tray)	60 - 220 g/m <sup>2</sup>
Output Capacity	150 sheets

Supplies	C3010ND
Toner (Black)	CLT-K503L (8,000 pages) * Declared Yield Value in accordance with ISO/IEC 19798 * Ships with initial toner cartridges yield 4,000 pages
Toner (Color)	Yellow Toner : CLT-Y503L (5,000 pages) Magenta Toner : CLT-M503L (5,000 pages) Cyan Toner : CLT-C503L (5,000 pages) * Declared Yield Value in accordance with ISO/IEC 19798 * Ships with initial toner cartridges yield 2,500 pages

### Options

Second Cassette Tray	SL-SCF3000
Capacity	550 sheets
Media Sizes	A4, A5, B5(JIS), B5(ISO), Legal, Letter, Executive, Statement, Oficio, Folio, Custom (98 x 210 mm - 216 x 356 mm (3.86" x 8.3" - 8.5" x 14"))
Media types	Plain, Thin, Thick, Recycled, Bond, Archive, LetterHead, Hole Punched, Cardstock
Media weight	60 - 163 g/m <sup>2</sup>
Sensing	H/W Install Detect, Paper Empty Detect
Dimension (WxDxH)	420 x 453 x 147 mm (16.5" x 17.8" x 5.8")
Weight	5.4 kg (11.9 lb)